

SUPERMAP COMMUNICATIONS

April 2023 Issue 07

www.supermap.com

The 21st SuperMap GIS Contest

——Start Your GIS Journey with SuperMap

2023 Geospatial Information Software
Technology Conference



Who is SuperMap?

Founded in 1997, SuperMap consists of SuperMap Software (parent company, stock code: 300036), wholly owned subsidiaries, and holding subsidiaries, as well as domestic branch offices and agencies. The total staff number of SuperMap is more than 4,000 and the annual revenue reached 232 million USD (1.6 billion RMB). SuperMap is a platform software and application software manufacturer focusing on Geographic Information Software (generalized GIS) and Geospatial Intelligence (GI), and a key player in Information Technology Application Innovation Industry, Spatio-Temporal Big Data, Artificial Intelligence, and Virtual Reality.

1997
Founded

How has SuperMap performed so far?

Together with more than 3,000 Independent Software Vendor (ISV) partners and hundreds of thousands of developers, SuperMap empowers the informatization of governments and enterprises in nearly 100 industries. It has developed distributors and partners in over 50 countries and SuperMap GIS end users in over 100 countries. Now, SuperMap ranks 1st in the GIS software market in China and 2nd globally.

100+
Countries'
Users

What will SuperMap be?

With "Innovate IT Value with Geo-intelligence" as the mission and "Create Cutting-edge Technologies constantly, Light up Every Corner of the Planet with Geo-intelligence" as the vision, SuperMap will keep providing advanced GIS technologies and products to more global users.

1000+
Partners

4000+
Employees

SuperMap



SUPERMAP COMMUNICATIONS

Contents



Reach us here!

Building 107, A10 Jiuxianqiao

North Road,

Chaoyang, Beijing, 100015, China

Tel: +86-10-59896503

Fax: +86-10-59896666

Email: biz@supermap.com

www.supermap.com



<https://www.linkedin.com/company/supermap/>



<https://www.facebook.com/SuperMap/>



https://www.twitter.com/SuperMap_GIS



<https://www.youtube.com/user/SuperMapGIS/>



https://www.instagram.com/supermap_gis/

FOCUS

- 4 The 21st SuperMap GIS Contest
Start Your GIS Journey with SuperMap
- 8 Prize-winning Works Show
- 9 Insider Voice
- 15 Campus Ambassadors

UPCOMING EVENTS

- 19 2023 Geospatial Information Software Technology
Conference
- 19 6th International Workshop on GIS Technology and
Application

The 21st SuperMap GIS Contest

Start Your GIS Journey with SuperMap



At present, the integration of GIS technology and IT technology is deepening. GIS applications have penetrated all aspects of society, and the geographic information industry has also entered a new era of transformation and development. GIS education must keep pace with the times and continuously cultivate multi-dimensional talents in order to meet the needs.

How will better GIS education be provided? We believe that GIS education in colleges and universities should not only develop and innovate in the discipline, but also pay close attention to the latest GIS technology and application development, and cultivate high-quality compound talents. Over the years, SuperMap has insisted on promoting the GIS education strategy and cooperated with many universities around the world to create a number of special activities to help cultivate GIS talents.

We are committed to building better GIS education activities. Following the vigorous development of the “SuperMap Campus Ambassador” program in China, we are now looking for campus ambassadors from all over the world. Various campus activities are held in major universities around the world, providing comprehensive and rich industry-leading information and popular

activities for the teachers and students of geographic information-related majors and other majors in the school.

We are committed to providing a better platform for GIS research. The Future GIS Laboratory of SuperMap Research Institute has created a joint training program for postgraduates, and promises to carry out lasting and effective cooperation with universities and research institutes in terms of achievement transformation, scientific research, talents, etc., and jointly promote industrial development.

We endeavor to provide better GIS training activities. SuperMap continues to empower college teachers, and organizes GIS technology seminars for young teachers in China, attracting a large number of participants.

After 21 years, the SuperMap GIS Contest has become a well-known event in the GIS field. Many students have found their enthusiasm for GIS learning here and learned how to use GIS software to solve problems in life. They have truly applied what they have learned. As the organizer of the competition, SuperMap has been innovating over the past 21 years, constantly innovating the system, and helping students gain more through the competition.

Explore Now!

The 21st SuperMap GIS Contest is open to all students all over the world. It provides an open competition platform with a rigorous and innovative competition system and a fair and authoritative stage for students to compete, presenting innovative projects with SuperMap GIS technology.

The SuperMap GIS Contest is organized by The Geographical Society of China, China Association for Geographic Information System, SuperMap Software Co., Ltd., and supported by the International Federation of Surveyors. All the college and university students can enter this contest by team or individually, and each team should consist of 1–4 students and up to 2 instructors.

Four categories are set for the contest: Mapping, Application Analysis, Paper and Development. Invited judges will select first, second and third-place winners for each category on the principle of openness, fairness and justice. Every winner will get the corresponding certificate and bonus.

Registration starts on March 15, 2023, and the Submission Deadline is on September 15, 2023.

» Categories

Mapping

Free topic selection. It requires creating a specific thematic map through data processing and mapping methods.

Application Analysis

Free topic selection. It requires solving the real needs of industrial applications and daily life through the analysis and mining of spatial data.

Paper

It requires to be academic and application research based on GIS, such as application cases, industrial solutions, 2D and 3D integration applications, current development status and trend research, the application of emerging technologies such as big data and AI(artificial intelligence), development skills and experience, etc.

Development

Free topic selection. It requires designing and developing application systems with the current mainstream IT technology and reflecting the application value of GIS in various fields.

» Judging

All the prizes will be determined by the invited experts and scholars in the industry, who will be responsible for reviewing the competition on the principle of openness, fairness and justice. Judging criteria for each category can be found at www.giscontest.com

For the Mapping, Application Analysis and Paper group, the judging panel will select First, Second and Third–place winners directly.

For the Development group, judges will select finalists, and then select First, Second and Third–place winners by an oral defense.

Prizes

First, second & third prizes and bonus are set for each category.

All winners will be awarded Contest Certificate.

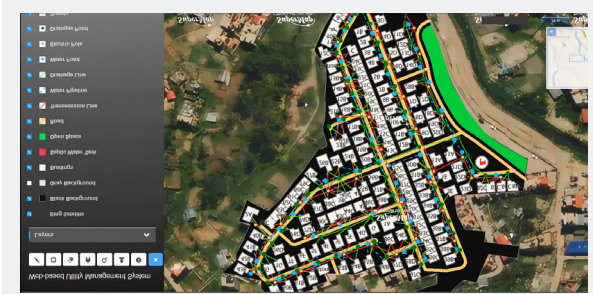
Intern/job opportunities in SuperMap.

More detailed information about the registration, requirements and technical training can be found at www.giscontest.com.

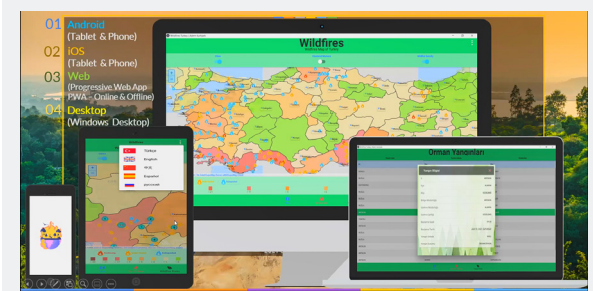


Prize-winning Works Show

Development Category

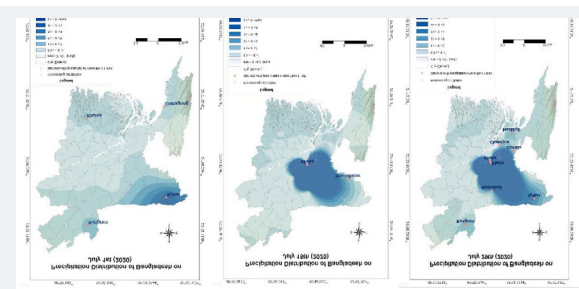


Web-based Utility Management System for Housing
Raj Bhattarai, Kathmandu University (Nepal)

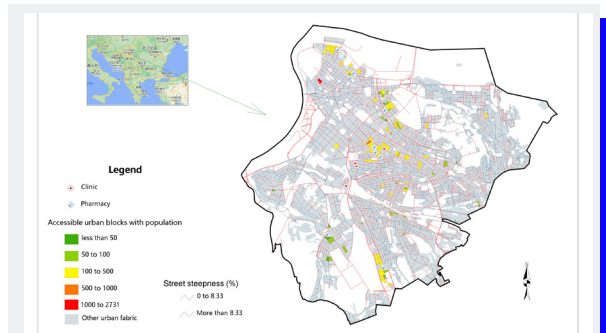


Turkey Forest Fire Management System
Adem Kurtipek, Eskişehir Teknik Üniversitesi (Turkey)

Application Analysis Category

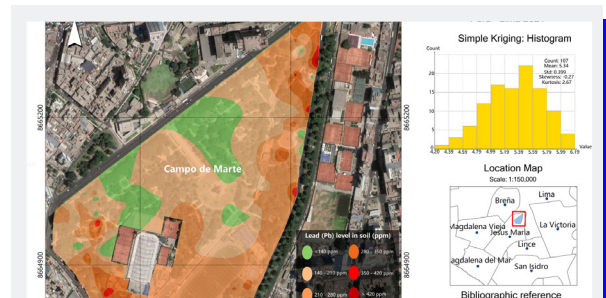


Spatio-temporal Analysis of Meteorological Data in Bangladesh & Public Healthcare Facilities Service Area in Dhaka District
Nishat Rayhana Eshita, Jahangirnagar University (Bangladesh)

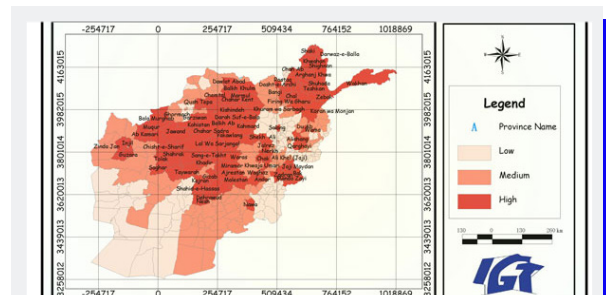


Potential Housing Locations for Disabled People
Nikola Vracevic, University of Belgrade Faculty of Geography (Serbia)

Mapping Category



Level of lead in the soils of Campo de Marte Park, Jesus María
Jhimy Brayam Castro Pantoja, Universidad Nacional Agraria La Molina (Perú)



Food Insecurity in Afghanistan 2019
KOUAME MONDESIR NDRI, Université Félix Houphouët Boigny (Cote d'Ivoire)

INSIDER VOICE

We are very honored to have invited the contest supervisor, the prize winner, training instructor, and the SuperMap campus activity ambassador to share their experiences and opinions.



Cai Zhongliang

Professor, Geographic Information Science Department
of Wuhan University

Supervisor of SuperMap GIS Contest Competitors

Could you please share your experiences with the SuperMap GIS Contest?

I have participated in the SuperMap GIS Contest as an instructor with my students. Some teams have won the awards. I am also supporting the activities held by school ambassadors of the SuperMap GIS Contest at Wuhan University. In 2012, the 1st SuperMap Wuhan University GIS Development Contest was held, and my team won the first prize in the development category. I was also very honored to be awarded an Excellent Instructor.

What is your opinion of subject competitions for students?

Competitions can not only strengthen the learning and understanding of theoretical knowledge but also cultivate students' abilities in scientific research, innovation, practice, and teamwork. In particular, the cultivation of scientific research ability is a very important role in such competitions. The scientific competition with the project as the carrier covers the scientific research process from topic selection to project approval, design, research (development), summary, report (display), and achievement publication, comprehensively learning scientific research knowledge and method system. It develops students' scientific research awareness, and the ability to solve problems independently.

How do you think will the research achievements such as the works of the contest be introduced to the market and be applied in practice?

Colleges and universities have absolute advantages in scientific research and personnel training, and are more suitable for theoretical and method research in GIS and related fields, key technology exploration and breakthroughs, prototype system design and development, and personnel training. Enterprises perform better at achievement transformation and

engineering application. Enterprises have strong and stable engineering and technical personnel, directly face the market or users, and master the market development needs and practical technology of engineering applications. Scientific research and personnel training at schools cannot be separated from social needs. Demand-driven scientific research and development are truly valuable, and these needs and the transformation of scientific research results can be obtained and implemented through enterprises; enterprises have capital and market needs, but cannot invest a lot in scientific research and prototypes research and development, and universities can provide support. The industry-university-research platform for school-enterprise cooperation is to achieve the natural environment and conditions for the organic integration of the two parties, solve the problems mentioned above in industry-university-research, and then build an incubator for the transformation of scientific research results led by enterprises into engineering applications. It may finish "the last mile" of the transformation from scientific achievements to practical projects, boosting industry development, and forming a closed loop of collaborative development of industry-university-research.

Could you give some suggestions about learning and seeking jobs to students majoring in GIS?

For school learning

a. Formulate academic planning and study plan. Determine the research direction as early as possible, formulate learning goals, course selection plans and study arrangements that suit you. Only when there is a

destination will we choose the optimal path. b. Cultivation of both comprehensive and professional ability. General education courses can broaden the breadth of knowledge and improve comprehensive quality; professional basic courses with both science and engineering can consolidate the professional foundation; professional courses combined with theory and practice can expand professional depth. c. Proactively cultivate learning, scientific research, and innovation capabilities. According to your own goals, learn knowledge, cultivate your own scientific research and innovation capabilities, participate in scientific research practice activities, and focus on comprehensive ability training.

For employment

It is suggested that students majoring in GIS may consider engaging in teaching or scientific research in institutions of higher learning, scientific research institutes, and enterprises. In recent years, most of Wuhan University's GIS doctorates are employed in universities and research institutes, and undergraduates are mostly employed in GIS-related leading companies such as IT and the Internet. Some undergraduates choose to continue to study in China or study abroad. Some choose to start their own businesses. Due to the characteristics of GIS majors, most of the graduates' employment positions are related to computer and other majors (software development, data engineering, etc.), forming competence over some computer majors. It is recommended that students choose R&D and data engineering positions, and try to choose a job closely related to the GIS profession, so that they can give full play to their professional advantages.



Nishat Rayhana Eshita, Jahangirnagar University
(Bangladesh)

Second Prize Winner of Application Analysis Category
(2021)

Could you give us a brief overview of your work?

My work “Spatio-temporal Analysis of Meteorological Data in Bangladesh & Public Healthcare Facilities Service Area in Dhaka District” is based on a statistical analysis of the public service facilities, by analyzing the national precipitation and temperature distribution in Bangladesh in July (2020) and the existing public medical facility service areas in Dhaka to manage the existing public service facilities and reflect on the urban planning. These analyses will help make

better decisions before planning tourism in specific months and locations. In my work, I've analyzed the datasets in SuperMap GIS iDesktop 10i, which is a robust technology and it provided me with lots of functionalities for my datasets.

Which was the most difficult part of your preparation and how did you solve it?

The most difficult task for me was to determine the appropriate methodology for the analysis of my datasets. But as SuperMap iDesktop has a number of ready-to-use toolsets, I found my exact functionalities in it.

What was the big takeaway for you through entering the contest?

I got myself connected with a large international GIS community and learned a wide range of technical solutions from the trainers of the SuperMap GIS Contest.

The 21st SuperMap GIS Contest is now in full swing. Do you have any advice for contestants?

Have fun with your work, and take suggestions from the trainers and local representatives of SuperMap as they are super friendly.



Zhang Mengyi
Instructor of SuperMap GIS Contest Training

As an experienced instructor in the SuperMap GIS Contest training, could you explain what kind of training will be offered to contestants?

SuperMap GIS Contest provides a variety of trainings, including live streaming and free videos. We'll guide contestants on general requirements for making teams and submitting works in proper formats, share excellent works from previous contests, and give some hints on how to impress the judges with sophisticated skills, thorough analysis, and creative topics. Moreover, there are a range of trainings designed for specific GIS application skills such as mapping, analysis, 3D GIS, and 2D/3D Web GIS development, from which contestants might choose to learn at any time based on their interests.

Is there anything new that we can expect from this year's training?

This year we are going to introduce the latest version of SuperMap GIS products to the contestants, which integrate the innovative GIS technology with a modern and more user-friendly interface. Not only will we explore basic skills of GIS application with SuperMap GIS 2022 but we also plan to conduct demos similar to real projects and learn how to deal with complex tasks and massive data using Geoprocessing Automation Model. Additionally, feel free to tell us your specifically interested fields and ideas about the training topic, so that we might add them to the plan. Please contact me via zhangmengyi@supermap.com.

Do you have any suggestions for contestants?

We have received plenty of excellent work every year, impressing us with creativity, thorough reports, aesthetic maps/interfaces, and sophisticated system design. These are the four key highlights the judges are looking for. Among them, thorough reports and aesthetic maps/interfaces are necessary elements for winners' work, while creativity and sophisticated system design could level up your work one step further to the biggest prize. However, pitfalls often occur when contestants misinterpret the importance of the four key highlights. A lot of those who missed the reward did impress the judges with their creativity or beautiful maps, but their submitted reports are too simple, just summarizing several-month hard work in less than 10 sentences, and even failed to provide complete data of their

work. In such cases, the judges cannot evaluate the amount and hardship of their work, nor could they fully understand the aims and practical values of the work. So, please consider how to have a clear and thorough record of your work from the beginning, and keep it till the final submission. Another kind of pity occurs when contestants choose the wrong group to participate in. We often find some pretty maps from the analysis group, which are created with well-prepared data while involved with little spatial analysis skills. They could have been considered winners in the mapping group but missed the basic requirement for the analysis group, aka a complete spatial analysis workflow applying a series of spatial analysis tools. Therefore, choosing a suitable group and planning your project based on the specific group requirements are the principle for winning the prize.

Could you share with us more exciting activities of SuperMap that are open to students this year?

Besides showing GIS skills in SuperMap GIS Contest, there are more opportunities for students to practice professional skills and learn more about GIS industrial applications. University students around the world may apply to become SuperMap Campus Ambassadors. Once the application is approved, you would be the representative of the SuperMap GIS Contest at your university. Your task is to organize your peers to participate in SuperMap GIS Contest and other SuperMap GIS events if possible, and we will provide you with certificates, special prizes, and any other support you need. Also, SuperMap is going to hold the annual Geospatial Information Software Technology Conference this year, which is a great chance for university students to open their minds on how the GIS industry promotes the development of the world.





Mburu Eileen
SuperMap Intern, Campus Activity Ambassador (Kenya)

Why did you apply for the internship at SuperMap?

As I have always been interested in spatial data and how this can be used in the solving of real-world problems, SuperMap presented an opportunity to be part of a company whose ideals match mine, that is, to provide innovative GIS solutions and application services to various industries.

How would you describe your working experience in SuperMap?

In my region, I've had engagements and an exchange of ideas with leading companies and top institutions in the GIS industry. This has not only helped in the

tunderstanding of the industry but equally in the application of GIS in real-life issues. As SuperMap has carved a niche for itself in its BitDC technology, the presenting of customized SuperMap solutions in this regard to the region has garnered much interest for example 3D Advanced Modelling solutions. Working remotely has also allowed me to have a flexible work schedule with increased productivity as I am able to work without interruptions.

How will you recommend the SuperMap GIS Contest to your schoolmates?

SuperMap's GIS Contest encourages the use of spatial data and the developing of GIS Applications using SuperMap software. It also provides a platform o harness your skills in the visualization, analysis, and understanding of real-time events.

Winners of the SuperMap GIS Contest will gain intern/job opportunities. What suggestions will you give to students intending to join SuperMap?

SuperMap would be a great place to start! Other than being a company whose sole aim is in providing advanced GIS technologies and products, SuperMap's diversified network of employees/interns allows you to share ideas among people working in varied GIS sectors.



The Call for SuperMap Global Campus Ambassadors is Now Open!

We are looking for Campus Ambassadors, the representatives of SuperMap GIS Contest at universities across the globe. All Campus Ambassadors will be provided with certificates and special Prizes. Don't miss out on all fun!

Duties

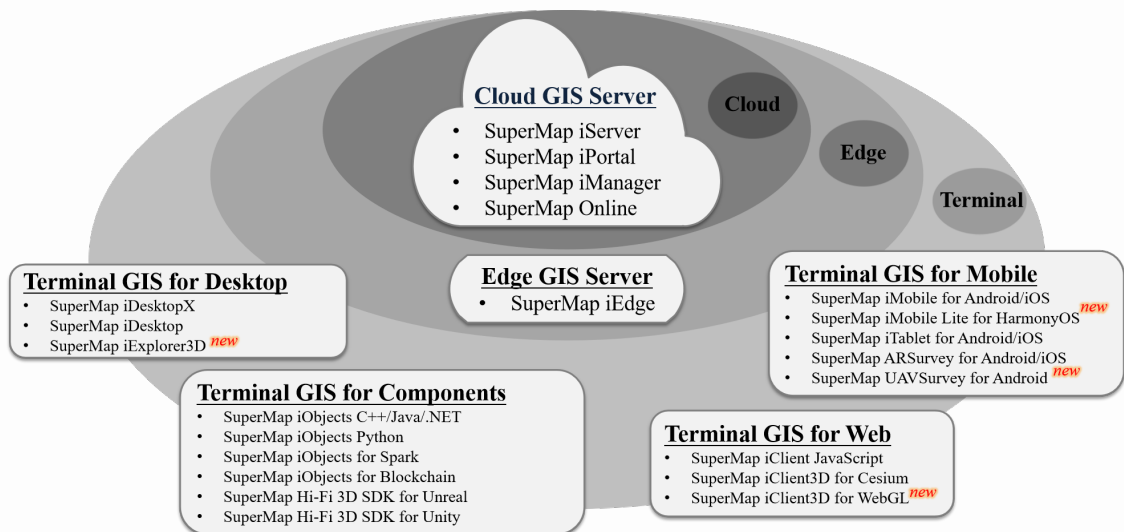
- Implement and promote SuperMap campus activities, such as the SuperMap GIS Contest and training (online/offline)
- Establish and operate the school's contact group, follow up entries of the SuperMap GIS Contest, and make real-time feedback
- Supervise the submission of works, and ensure quality and quantity

Apply Now: <https://bit.ly/3Lpm8T0>

Products

What is SuperMap GIS

SuperMap is devoted to developing and providing the most innovative Geographic Information System (GIS) platforms and solutions for global customers. SuperMap product line includes a full range of GIS platforms, including Desktop GIS, Server/Web GIS, Mobile GIS, and Online GIS, which makes SuperMap GIS known as one of the most complete GIS software platforms.



SuperMap GIS 2022 Product Architecture

SuperMap iDesktop: Full-featured Customizable Desktop GIS

SuperMap iDesktopX: Full-featured Customizable Cross Platform Desktop GIS

SuperMap iExplorer3D: 3D Scene Browsing Software

SuperMap iObjects: Full-featured Components GIS SDKs

SuperMap iTablet: Native App for Mobile GIS

SuperMap ARSurvey: AR field surveying tools for Mobile GIS

SuperMap UAV Survey: UAV field survey and annotation software

SuperMap iMobile: Native SDKs for Mobile GIS

SuperMap iServer: Full-featured Application Server for Cloud GIS

SuperMap iPortal: Portal for Cloud GIS

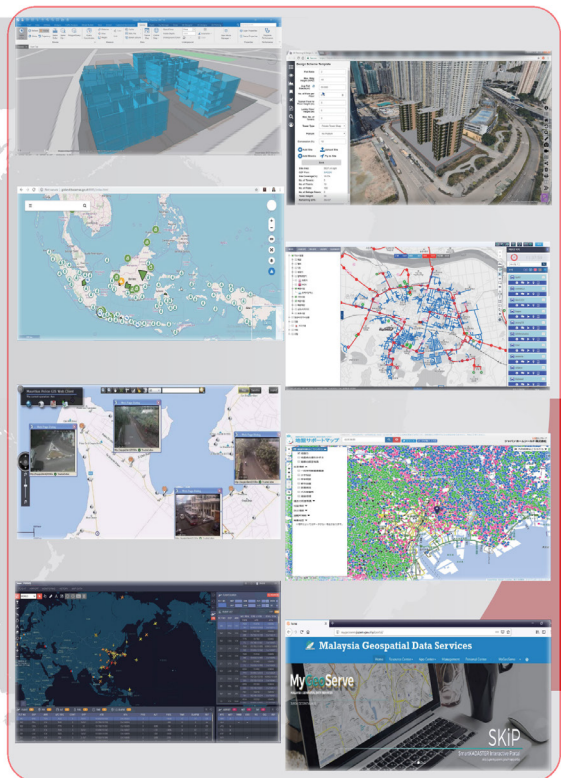
SuperMap iClient: Web GIS APIs for Browsers

SuperMap iManager: Operation Manager for Cloud GIS

SuperMap iEdge: Server for Edge Computing GIS

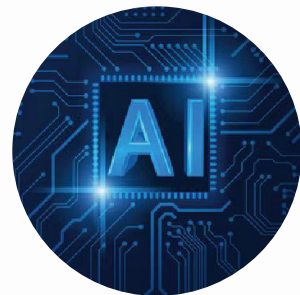
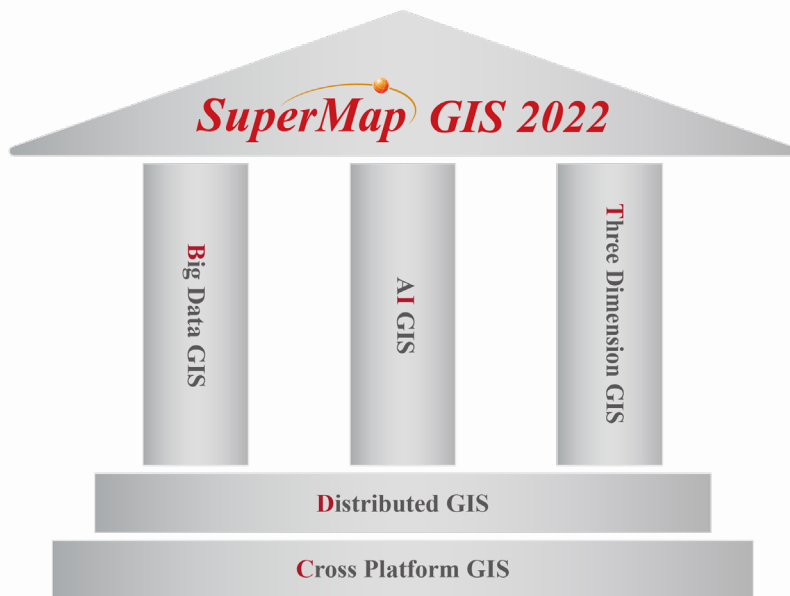
Application Cases

-  Municipality GIS for Nyköping, Sweden
-  3D Underground Pipeline Management System, Germany
-  3D Cadastral Project, Turkey
-  Mobile AI Recognition of Water Meter, South Africa
-  National Police GIS, Mauritius
-  Land Property Management System, Egypt
-  House Decision Support System, Malaysia
-  Geospatial Data Services Portal, Malaysia
-  Global IOT Management System of HIACHI, Japan
-  One Map of Ground Strength of National Residence, Japan
-  Mobile Mapping Solution for Foreclime, Indonesia
-  Big Data Spatial for Secure BaseMap System in BSSN, Indonesia
-  Nature Reservoirs Locating System, Thailand
-  Smart Agriculture Real-time Soil Monitoring System, Thailand
-  Pipeline Analysis Solution, South Korea
-  Forest Disaster Management System, South Korea
-  Flight Monitoring System for Asiana Airline, South Korea
-  Mountain Development Support System, Cuba
-  Epidemic Surveillance System, Laos



Technologies

In SuperMap GIS 2022, SuperMap has further improved the five key technologies system (BitDC) of GIS platform software. They are big data GIS, AI (artificial intelligence) GIS, new 3D GIS, distributed GIS and cross-platform GIS technology, which enriched and innovated GIS theory and technology, and empowered the informatization of various industries.



EVENTS

2023 Geospatial Information Software Technology Conference

The 2023 Geospatial Information Software Technology Conference, or GIS TECH 2023 for short, will be held at the China National Convention Center, Beijing, China, in June 2023.

The Geospatial Information Software Technology Conference (formerly the GIS Software Technology Conference) is a global GIS event that is of great influence in the geospatial industry in Asia and the world at large. Against the background of a transition from informatization and digitization to intelligence, and an urgent demand for intelligence in various industries, the conference aims at sharing the latest advances in empowering a wide variety of industries with spatial intelligence technologies and products enabled by deeply integrating GIS with RS, GPS and cutting-edge IT technologies, and exploring its future progression.

Since its debut in 2017, the Geospatial Information Software Technology Conference has welcomed thousands of attendees from all over the world. Guests invited include leaders of government departments, authoritative academicians and experts, talents from leading IT enterprises, and executives from famous geospatial companies from around the world.

With the theme of “Geospatial Intelligence, Elevated by Integration”, the conference will center on topics including GIS platform software technologies and GIS applications in natural resources, water conservancy, meteorology, environment, housing, airports, etc.

6th International Workshop on GIS Technology and Application

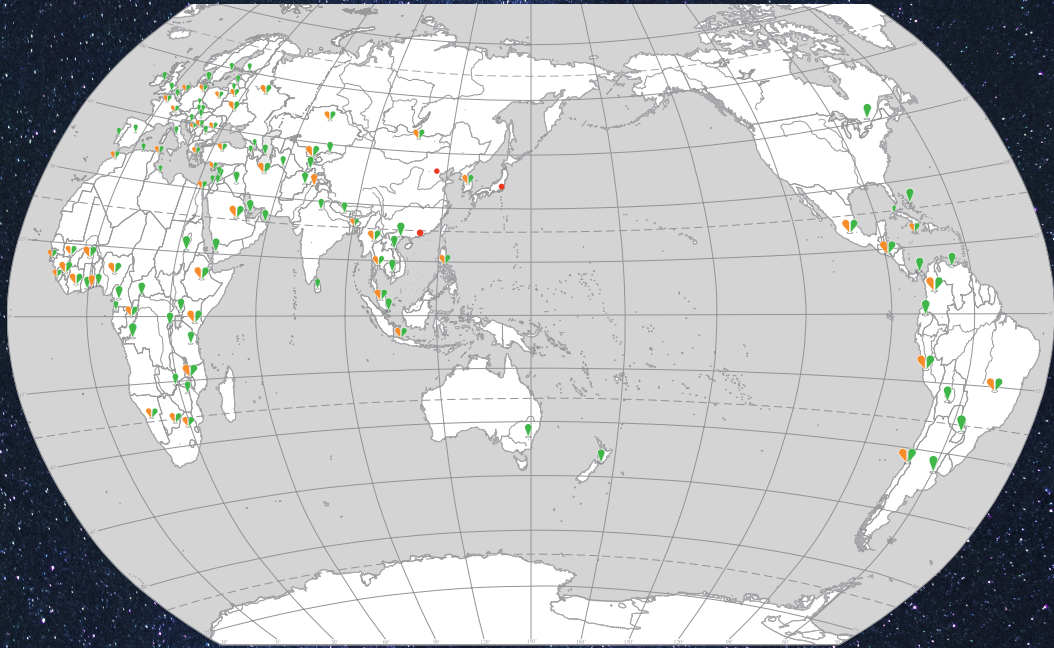
With the goal of expanding international cooperation among the geospatial community and enhancing the capabilities of geospatial software talents on geographic information applications and management, International Workshop on GIS Technology and Application was initiated by SuperMap in 2018. During the first two years, the workshop welcomed people from more than 20 countries to gather at Beijing. In the midst of the COVID-19 pandemic, the workshop went virtual, attracting hundreds of participants each year.

This year, the 6th International Workshop on GIS Technology and Application is scheduled to be held in June. It is open to government officials from geographical information departments, industry experts, and enterprise technical directors from across the globe.

Follow SuperMap on social media channels to stay updated!



Global Distributors and Users



● HQ & Branch Offices

▲ Distributors

▲ Customers

SuperMap has developed distributors and partners in more than 50 countries and SuperMap GIS end users in over 100 countries. We are looking for more partners from all over the world to build a global partner eco-system.